



Murder Mystery Who? Where? And When?



Situation:

Police have been called to a local School. Lying on the floor is the body of a murdered teacher! Police search the School and speak with witnesses to find out who the suspect is and who the murdered teacher could be.

Activity 1: You will need to find out who the victim is and who the suspect is.

Activity 2: You will need to find out where the crime scene is located.

Activity 3: You will need to find out when this heinous crime took place.

Good Luck Detectives!



Activity 1:

Possible Suspects

One of the following four people has committed the crime....

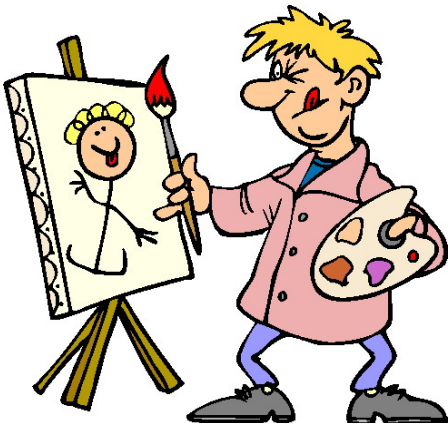
The criminal has made 2 mistakes, the victim has made 1 mistake.

The other two suspects have made 0 mistakes so can be eliminated.

WHO?.....

1. The Art Teacher

The Art Teacher made the following comments:



	Correct	incorrect
$9 + 43 = 51$		
$44 + 91 = 135$		
$52 + 51 = 103$		
$22 + 84 = 106$		
$21 + 78 = 99$		



2. The Maths Teacher

The maths Teacher made the following statements:



	Correct	incorrect
$(5 + 7) \div 2 = 6$		
$(5 \times 4) + 2 = 22$		
$(5 \times 3) + 5 = 20$		
$(3 \times 4) - 10 = 2$		
$(36 \div 6) - 2 = 4$		

3. The English Teacher

The English Teacher made the following statements:



	Correct	incorrect
$48 - 6 = 42$		
$94 - 9 = 85$		
$39 - 2 = 37$		
$91 - 79 = 12$		
$86 - 51 = 35$		

4. The Science Teacher

The Science Teacher made the following statements:



	Correct	incorrect
$8 \times 6 = 48$		
$3 \times 9 = 29$		
$11 \times 8 = 88$		
$7 \times 7 = 49$		
$4 \times 6 = 34$		

Who is the Victim??

Who is the Murderer??

Possible Suspects: ANSWERS

One of the following four people has committed the crime....

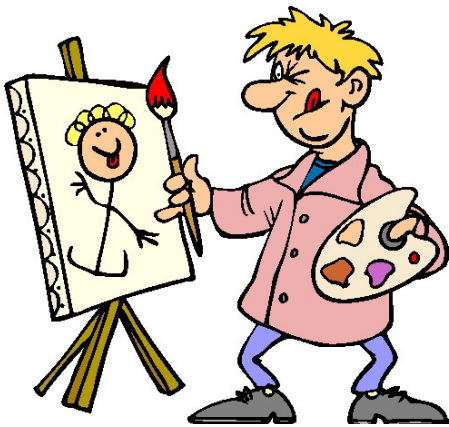
The criminal has made 2 mistakes, the victim has made 1 mistake.

The other two suspects have made 0 mistakes so can be eliminated.

WHO?.....

1. The Art Teacher

The Art Teacher made the following comments:

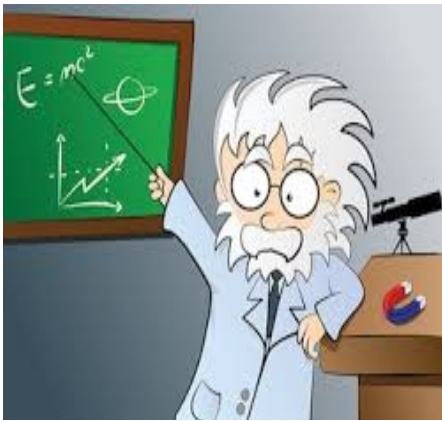


	Correct	incorrect
$9 + 43 = 51$		✓
$44 + 91 = 135$	✓	
$52 + 51 = 103$	✓	
$22 + 84 = 106$	✓	
$21 + 78 = 99$	✓	



2. The Maths Teacher

The maths Teacher made the following statements:



	Correct	incorrect
$(5 + 7) \div 2 = 2$	✓	
$(5 \times 4) + 2 = 22$	✓	
$5 \times 3 + 5 = 20$	✓	
$(3 \times 4) - 10 = 2$	✓	
$36 \div 6 - 2 = 4$	✓	

3. The English Teacher

The English Teacher made the following statements:



	Correct	incorrect
$48 - 6 = 42$	✓	
$94 - 9 = 85$	✓	
$39 - 2 = 37$	✓	
$91 - 79 = 12$	✓	
$86 - 51 = 35$	✓	

4. The Science Teacher

The Science Teacher made the following statements:



	Correct	incorrect
$8 \times 6 = 48$	✓	
$3 \times 9 = 29$		✓
$11 \times 8 = 88$	✓	
$7 \times 7 = 49$	✓	
$4 \times 6 = 34$		✓

Who is the Victim??

The Art Teacher!!

Who is the Murderer??

The Science Teacher!!

Where...??

Activity 2:

Activity 2 uses the Atbash cypher! The Atbash cypher is simply the alphabet reversed. Use the cypher below to help you crack the code.

Plaintext Alphabet	a	b	c	d	e	f	g	h	i	j	k	l	m	n	o	p	q	r	s	t	u	v	w	x	y	z
Ciphertext Alphabet	Z	Y	X	W	V	U	T	S	R	Q	P	O	N	M	L	K	J	I	H	G	F	E	D	C	B	A

GSRH ZDUFO XIRNV DZH XLNNRGGVW

RM GSV HXSLLO ORYIZIB

Where did the Murder take place??

The second set of clues involve serious detective ability! Are you up to the challenge?

Activity 2:

Activity 2 uses the Atbash cypher! The Atbash cypher is simply the alphabet reversed. Use the cypher below to help you crack the code.

Plaintext Alphabet	a	b	c	d	e	f	g	h	i	j	k	l	m	n	o	p	q	r	s	t	u	v	w	x	y	z
Ciphertext Alphabet	Z	Y	X	W	V	U	T	S	R	Q	P	O	N	M	L	K	J	I	H	G	F	E	D	C	B	A

GSRH ZDUFO XIRNV DZH XLNNRGGVW
 This awful crime was committed

RM GSV HXSLLO ORYIZIB
 in the school library

Where did the Murder take place??

The school library

When...?

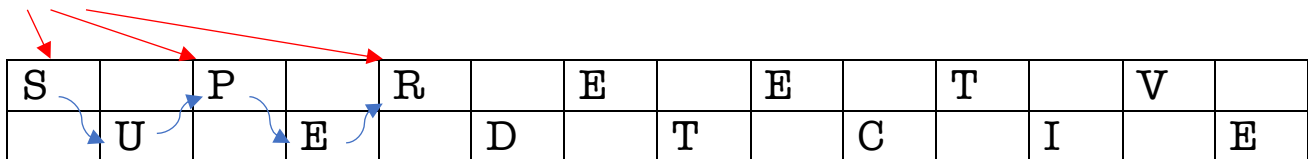
Activity 3:

The third clue has been written in Rail Fence Cypher. This was devised in ancient times and was used by the Greeks. This cypher forms a shape of the rails of an imaginary fence.

This cypher is sometimes called the 'zig zag' cypher, because it is read as a zig zag. To decode this type of cypher you need to write the code on a grid (rail). This code is written in two rails (rows).

Write out the letters missing one box each letter, then continue on the next row to form a diagonal (zig Zag). For example;

SPREETVUEDTCIE



= Super Detective

** This can be quite tricky, so if you are unsure get an adult to help you. Once you get the hang of it see if you can write some of your own coded messages. **

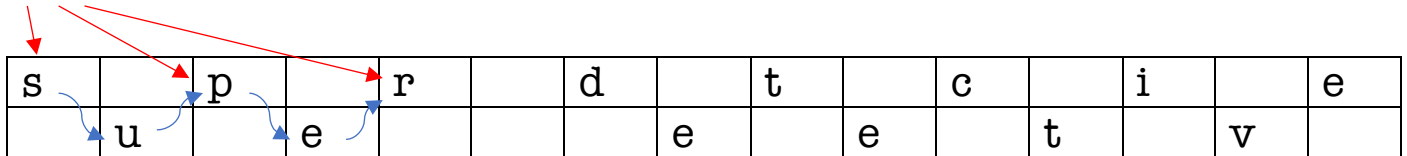
Activity 3:

The third clue has been written in Rail Fence Cypher. This was devised in ancient times and was used by the Greeks. This cypher forms a shape of the rails of an imaginary fence.

This cypher is sometimes called the 'zig zag' cypher, because it is read as a zig zag. To decode this type of cypher you need to write the code on a grid (rail). This code is written in two rails (rows).

Write out the letters missing one box each letter, then start on the next row to form a diagonal (zig Zag). For example;

SPRDTCIEUE EETV



= Super Detective

**This can be quite tricky, so if you are unsure get an adult to help you. Once you get the hang of it see if you can write some of your own coded messages. **

Can you decode the last clue??

TEUDRCURDTRATMOMNAHMREOCREABEKIENODY

T	E	U	D	R	C	U	R	D	T	R	A	T	M	O	M	N	A	
H	M	R	E	O	C	R	E	A	B	E	K	I	E	N	O	D	Y	

When did the Murder take place??

The murder occurred at break time
on Monday



CONGRATULATIONS Detective!!

This is to certify that



solved the crime!!